



GMT MONTHLY MEMBERSHIP PROGRESS REPORT

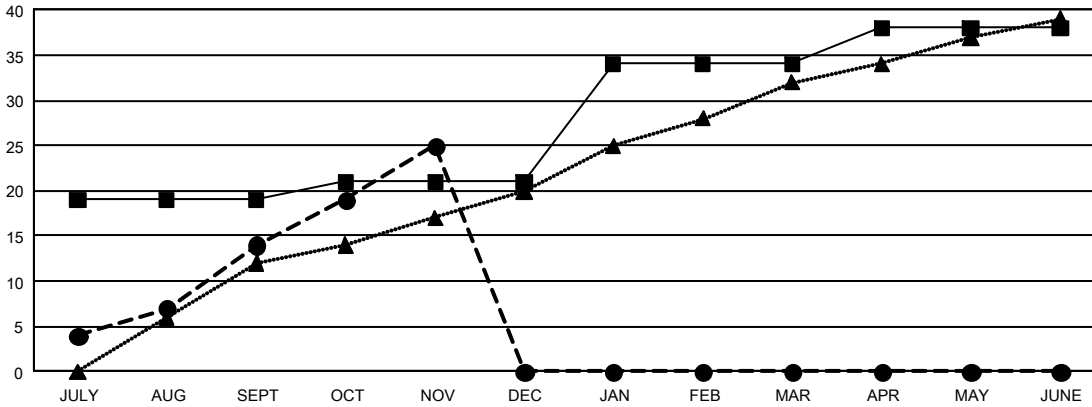
GAT Constitutional Area 5 - Korea

Results as of: 11/30/2024

REPORT DOES NOT INCLUDE CLUBS IN UNDISTRICTED AREAS.

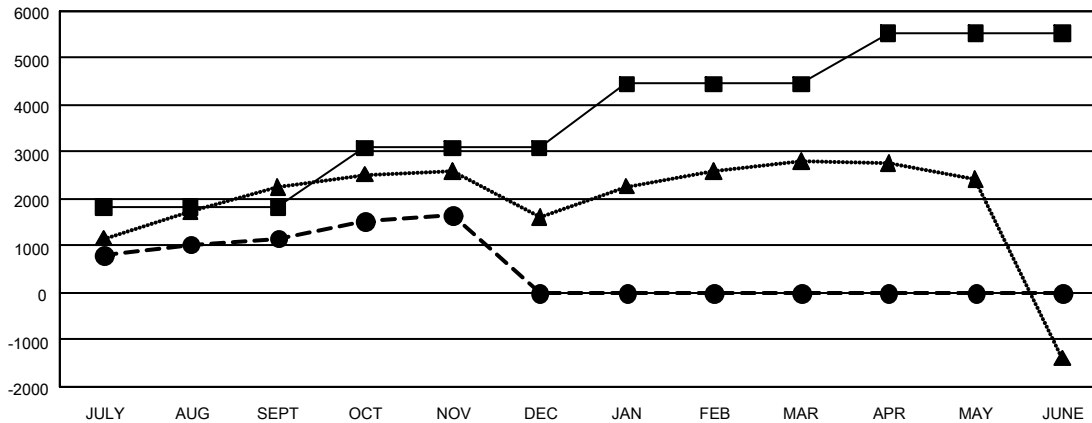
Clubs				Members			
RESULTS FOR 2024-2025				RESULTS FOR 2024-2025			
QUARTER	NEW CLUB GOAL	NEW CLUBS	DROPPED CLUBS	QUARTER	MEMBER GROWTH NET GOAL	MEMBER GROWTH ACTUAL	DROPPED MEMBERS ACTUAL (including transfers)
JULY/AUG/SEPT	19	14	8	JULY/AUG/SEPT	1,828	4,470	2,838
OCT/NOV/DEC	2	11	3	OCT/NOV/DEC	1,256	1,648	1,018
JAN/FEB/MAR	13	0	0	JAN/FEB/MAR	1,363	0	0
APR/MAY/JUNE	4	0	0	APR/MAY/JUNE	1,085	0	0

GOALS AND ACTUAL NEW CLUBS CUMULATIVE



- CURRENT YEAR GOALS FOR NEW CLUBS
- CURRENT YEAR ACTUAL NEW CLUBS
- ▲ LAST YEAR ACTUAL NEW CLUBS

GOALS AND ACTUAL MEMBERS CUMULATIVE



- MEMBER GROWTH NET GOAL
- MEMBER GROWTH ACTUAL
- ▲ LAST YEAR MEMBERSHIP ACTUAL

DROPPED CLUBS: 11	1,196 CLUBS OF 2,036 ADDED 1 OR MORE NEW MEMBERS	GENDER DISTRIBUTION MALE 52,212 (73.16%) FEMALE 19,144 (26.83%)
DROPPED MEMBERS DECEASED 96 CLUB CANCELLED 7 OTHER 3,651 TOTAL 3,754	CLICK HERE FOR CUMULATIVE MEMBERSHIP DATA	TOTAL FAMILY UNIT MEMBERS 0 FAMILY MEMBERS PAYING HALF DUES 0